



Jaime Sandoval PLA

Landscape Architect

Education and Registration

Bachelor of Science in Landscape Architecture, University of California Davis
Professional Landscape Architect CA #6913

Professional Summary

Mr. Sandoval has over 14 years of experience in landscape architectural design, with a focus on design for parks, urban/civic spaces, transportation/transit, education campuses, private development and public works projects. He has expertise in ADA-compliant design and stormwater management, the preparation of documents for Project Approval and Environmental (PA & ED) and Plans, Specifications & Estimates (PS & E) phases for multiple projects. Additionally, Jaime is an expert in the preparation of promotional, presentation and photorealistic visual impact graphics.

Parks Design Project Experience

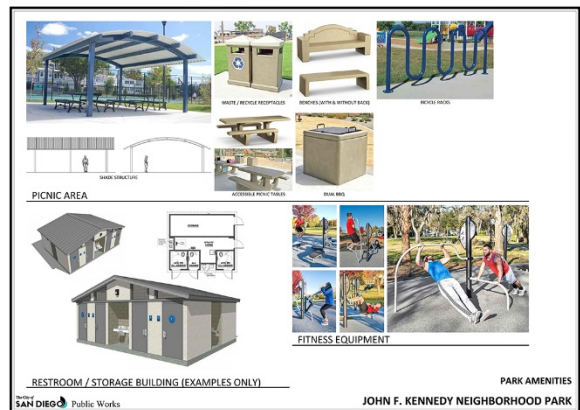
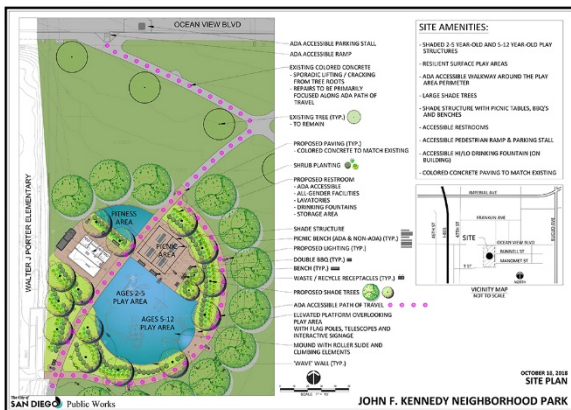
Collier Park, Phase 2 – Construction Documents, La Mesa, California

As La Mesa's first and oldest park, Collier Park was renovated in 2024 to provide improved recreational facilities for the surrounding neighborhood with the goals of providing increased play value, improved restroom facilities, a better organized site for optimal use, a consistent site theme, improved ADA access, added capacity for food truck events, expand natural park play opportunities and to honoring the parks rich history. As Senior Landscape Designer, Jaime Sandoval was responsible for the landscape design of this 3.5-acre portion of the park that received a full renovation including site design for a new plaza space, new restroom facilities, picnic area with a permanent shade structure, new tennis court, pavilion plaza, new play and fitness equipment, enhanced paving, decorative wall treatments, informal turf area, natural park area with butterfly/hummingbird gardens, mini amphitheater, and nature exploration areas. Jaime worked closely with the City Staff and consultant design team to develop a highly successful design that achieves all the project redevelopment goals.



***John F. Kennedy (JFK) Neighborhood Park - General Development Plan (GDP)
Amendment and Construction Drawings, San Diego, California***

The JFK Neighborhood Park Project consisted of replacing outdated playground equipment and restroom building as well as updating an existing GDP for the addition of a permanent shade structure within this 4-acre park. As the Senior Landscape Designer for the project, Jaime was responsible working with the Project Manager to amend the GDP plan, develop concept plans and graphics for council presentation. Working through design development, Mr. Sandoval was a key part of developing the construction documents and cost estimates for this renovation that centered around a ‘Shipwreck’ themed playground complete with ship play equipment, custom designed resilient surfacing, net climbers, roller slides, outlook binoculars and symbolic ‘crows nest’ flagpole. Additional playground features included ADA path of travel improvements, a prefabricated restroom building, BBQ area with picnic tables and shade structure, workout equipment, enhanced planting, and irrigation modifications.



Island Avenue Mini Park - Construction Drawings, San Diego, California

The Island Avenue Mini Park Project consisted of a complete renovation of a 0.25-acre park site with an approximate 30-foot change in elevation from the park entrance to the opposite end. As the Senior Landscape Designer for the project, Mr. Sandoval was responsible for design development and preparation of construction documents for the project while working closely with the Landscape Architect and Engineers to solve the grading challenges of the site. Mr. Sandoval was closely involved in developing the detail drawings necessary to ensure that the park safely met all the user needs while providing full ADA access throughout the site. The project budget is \$1.5k and is currently under construction an anticipated completion date of 2023.



Uptown Bikeway / Pride Plaza & Promenade, San Diego, California

As Senior Landscape Designer and Graphic Artist on the project, Mr. Sandoval was responsible for design development and construction documents and presentation graphics for this section of SANDAG's Uptown Bikeway Network. Presentation graphics included Charette Concept Boards, Colored Plan and Elevation Graphics along with 3D Graphics. Jaime also developed a layout and materials palette that was consistent with the context of the surrounding community, providing a space intended to engage future a wide variety of civic events.



Mission Bay Golf Course Irrigation and Electrical Upgrade Project, San Diego, California

The Mission Bay Golf Course Irrigation & Electrical upgrades project consisted of replacing outdated irrigation and electrical distribution systems serving this municipal golf course. As the Senior Landscape Designer for the prime consultant, RE Services staff member Jaime Sandoval was responsible for the close coordination with city and golf division staff to manage a specialized team of irrigation, electrical and lighting consultants to develop construction documents defining the new improvements. Proposed improvements included site electrical distribution system and enclosure replacement, and course-wide irrigation upgrades. Given the projects proximity to both residential development and coastal waters, Jaime was responsible for the preparation of nighttime lighting simulation graphics for City Environmental and Coastal Commission review.